

ROCKWALL BONUS

Elevation

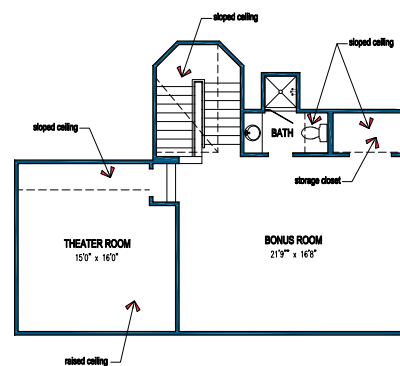
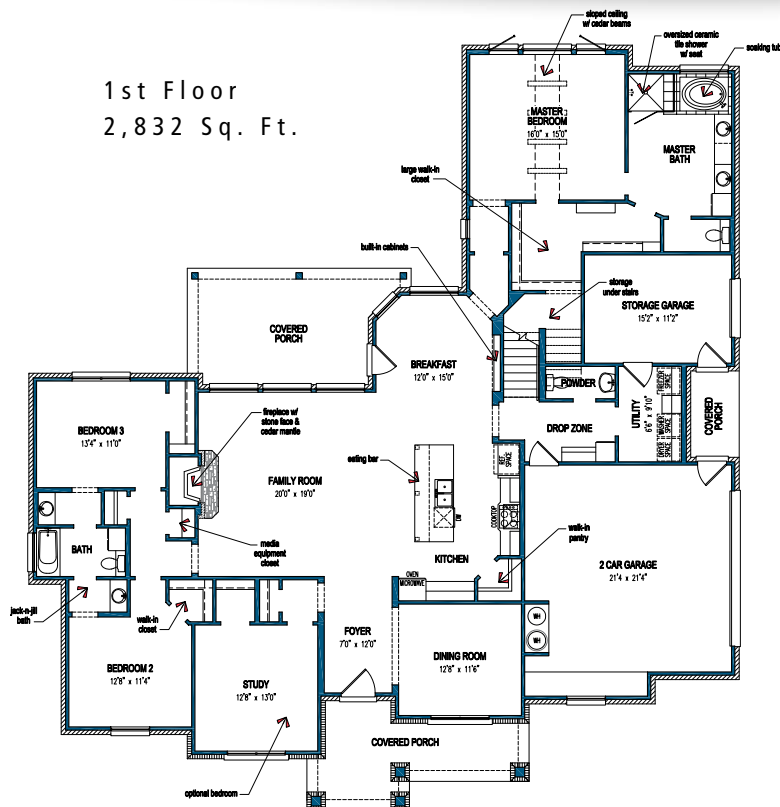
C

3,645 Sq. Ft.

3 Bedrooms | 3 Full and 1 Half Bathrooms



1st Floor
2,832 Sq. Ft.



2nd Floor
813 Sq. Ft.

Change this plan any way you want.
Move a wall, add a room—**Just ask!**

www.TilsonHomes.com



© Copyright 2017, Tilson Home Corporation Tilson continuously improves home designs and reserves the right to modify home features and specifications without notice or obligation. Square footage is approximate and includes overall dimensions. Renderings are drawn to be substantially correct. Tilson standard features may vary by home design and/or location. Contact a Tilson Sales Associate for details.



Angleton
800-275-0261

Bryan
800-275-8576

Houston
800-683-5171

McKinney
800-291-6812

San Marcos
800-929-2458

Weatherford
800-807-8093

Boerne
800-929-4663

Georgetown
888-816-2997

Katy
866-846-4443

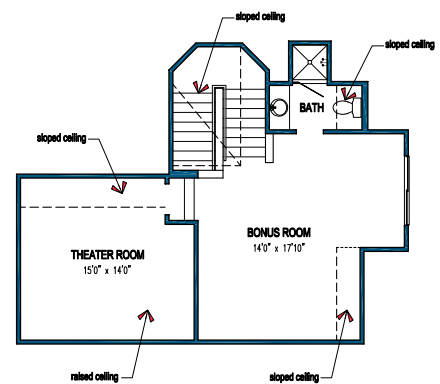
Midlothian
855-243-4583

Spring
888-540-6710

TILSON
Family Owned Since 1932

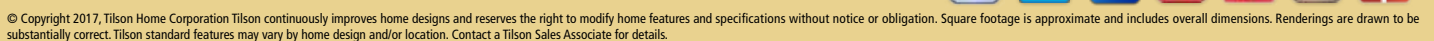
B

3 Full and 1 Half Bathrooms



2nd Floor
653 Sq. Ft.

www.TilsonHomes.com



Weatherford
800-807-8093

Spring
888-540-6710

